

STUDENT TAB MEETING

MINUTES, JANUARY 23, 2015

605 HODGES LIBRARY, 3:30-4:45

ACTION ITEMS

- Wireless access points on Ag Campus – when will those be increased / upgraded?
- Lynda.com – see if can find out not just total users but how much they are using the service?
- Tech Fee – what are current reserves?
- Suggestion for HOPE ticker – what the different numbers mean and how much money is left for the student

ATTENDING

- Mark Alexander, Jennifer Gramling, Doug Hawks, Jonathan Jackson, Larry Jennings, Leigh Mutchler, Drew Nash, David Ratledge, Daniel Richter, Catherine Schuman, Tese Stephens

APPROVAL OF MINUTES FOR OCTOBER 2014

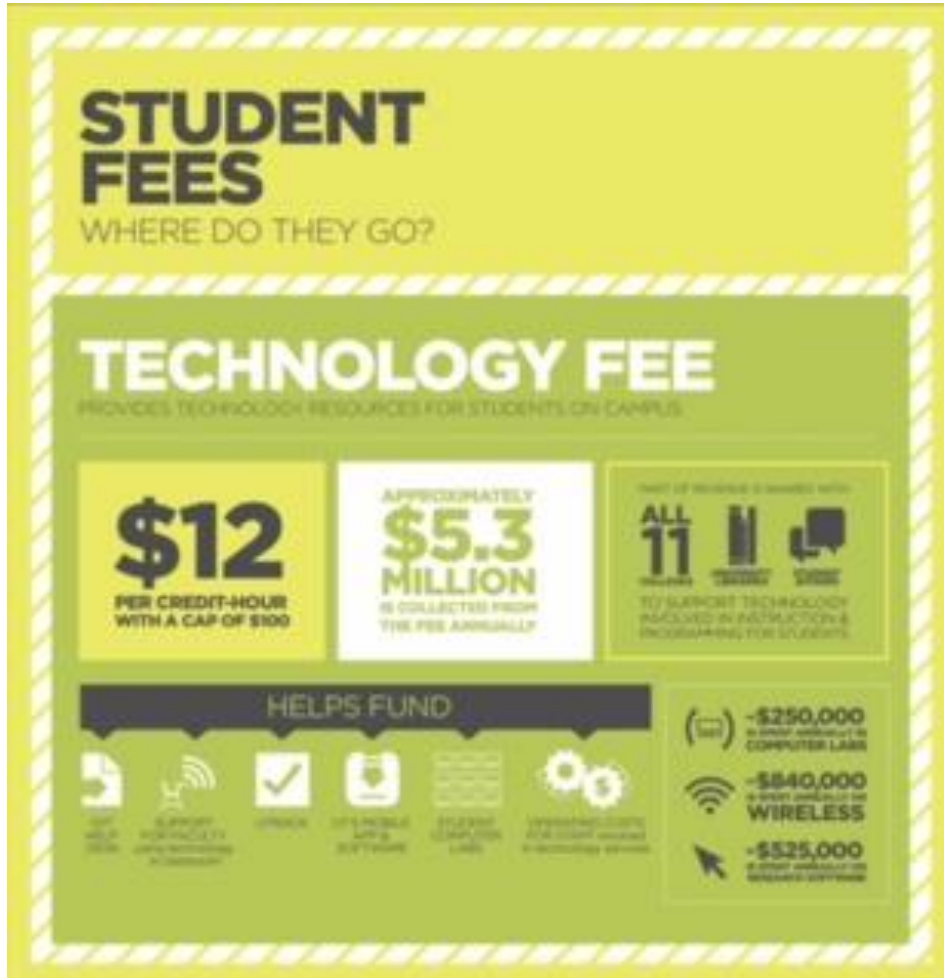
- Jackson moved, Richter seconded, motion passed, minutes are approved.
- Items requiring update:
 - NetReg device limit; request to increase; has been increased to 20 devices (for students). Nash confirms that the limit has increased. Question from **Hawks**: Is there a downside to having unused slots? **Jennings**: The system is robust and can handle a lot of entries. We don't want one person registering devices for other people, so we set a limit of 20. This is OIT's record for who owns the device.
 - Wireless access points upgrades or improvements on Ag Campus; no update available at this time. Schedule is proceeding.

LYNDA.COM

- Usage is increasing steadily; 1,683 users to date (1,000 students; 151 faculty; 545 staff)
- Retail cost at \$250/year would have been \$420,750; UT's annual cost is \$96,000
- Question from **Alexander**: We see the number of users; any way to measure how much they are using it? **Jennings**: Will look into that.

DAILY BEACON – ANNUAL NOTICE OF TECH FEE USAGE

- Will show up in *Beacon* soon
- Comment from **Alexander**: Will be a series of ads for the different student fees.



- Question from **Alexander**: What are the actual reserves for Tech Fee? **Jennings**: Don't have exact number handy; it's pretty substantial.

HOPE METER FOR MYUTK

- Get PPT from Larry for graphic
- Expects to be ready to go on-site by third quarter.
- Question from **Alexander**: Why are GPA hours and HOPE hours different? **Richter**: HOPE brings in transfer hours and includes dropped classes. **Nash**: Going to community college over summer counts toward HOPE but not GPA.
- Comment from **Alexander**: Should have some explanation of what the numbers mean. **Mutchler**: And "how much money do I have left?"

TECH FEE OFFSET FOR DAS (DISTRIBUTED ANTENNA SYSTEM FOR CELLPHONES)

- Problems with cellular service in some areas. OIT 2014 survey called out Haslam Business Building and Alumni Memorial. LEED certified buildings (e.g. Fred Brown Hall) will have even more issues.
- Looking at in-building DAS.
- Looking at partnering with carriers.
- \$350,000-\$400,000 per building. Comment from **Alexander**: looking at this for new student union.
- For new buildings, include in Capital Project funding.

FY16 COLLEGE / DEPARTMENT AWARD PROCESS

- February 2015 – call for Tech Fee requests
- April 1 – deadline for submissions
- April 24 – TAB review/approval
- Early May – Colleges/Units receive award notification
- See <http://techfee.utk.edu> for more information

NEW BUSINESS

- Please feel free to contact Reeves at any time with questions or concerns.

MEETING ADJOURNED